



ENROLLMENT REPORT

May
2017

Presented May 24th, 2017

SOUTH WHIDBEY SCHOOL DISTRICT NO. 206

Grade	High	Middle	Elementary	SWA	Total
K			80.00		80.00
1			89.00		89.00
2			84.02		84.02
3			84.00		84.00
4			99.00		99.00
5			107.18		107.18
6		112.19	1.00		113.19
7		111.58			111.58
8		102.72			102.72
9	113.92	-		9.25	123.17
10	108.64			8.80	117.44
11	86.52			14.09	100.61
12	91.74			9.41	101.15
Total	400.82	326.49	544.20	41.55	1,313.06

Student Enrollment (FTE) - May 2017

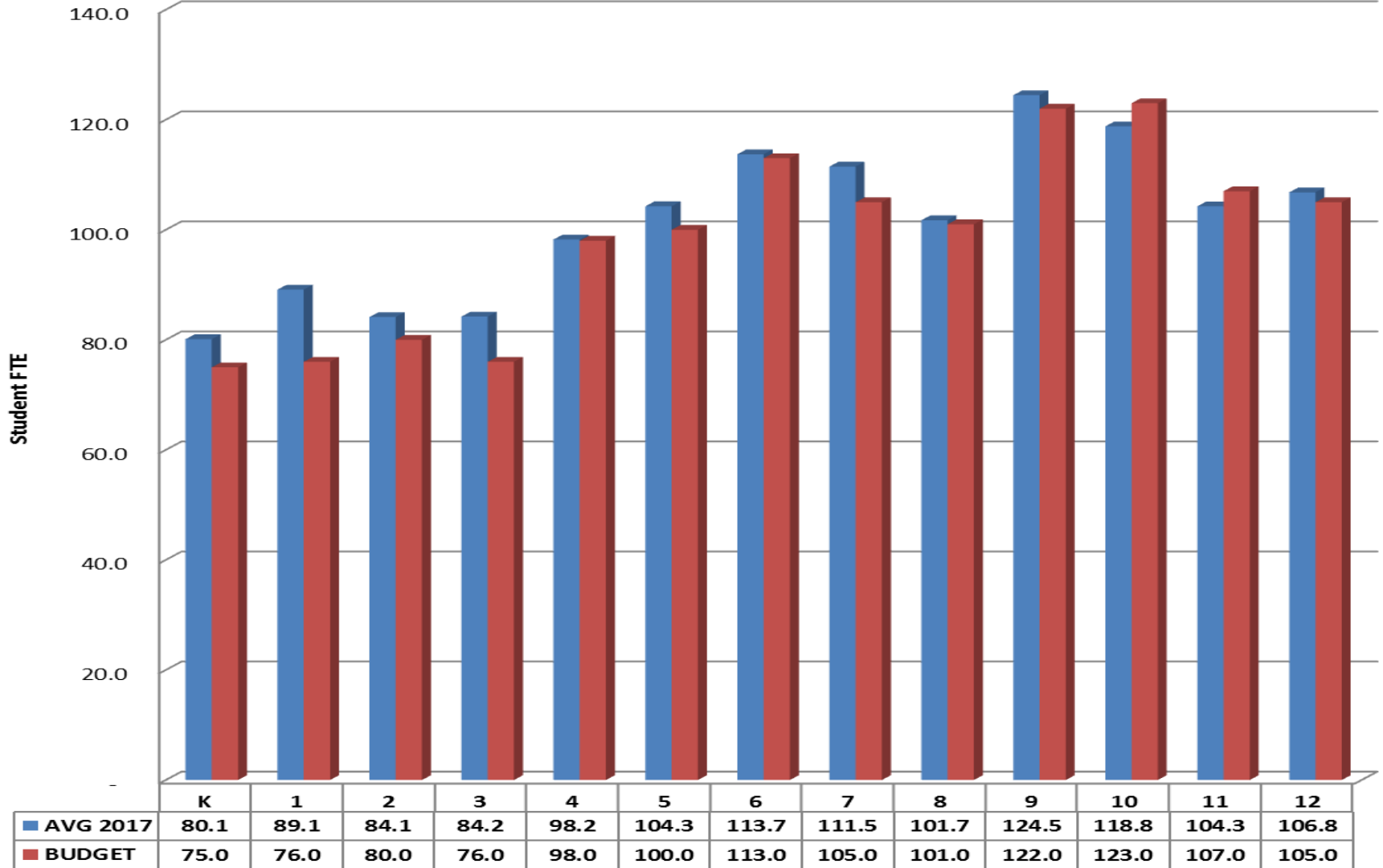
Change From Previous <u>Year Avg</u>	District-Wide											
	Year	Sep	Oct	Nov	Dec	Jan	Feb	Mar	Apr	May	June	Average
(39.64)	12/13 Actual	1,407	1,414	1,419	1,427	1,429	1,425	1,420	1,424	1,423	1,425	1,421
(38.29)	13/14 Actual	1,367	1,400	1,394	1,384	1,390	1,387	1,383	1,377	1,376	1,371	1,383
(22.68)	14/15 Actual	1,348	1,353	1,360	1,360	1,364	1,371	1,371	1,363	1,357	1,354	1,360
(21.13)	15/16 Actual	1,343	1,345	1,348	1,344	1,344	1,339	1,334	1,323	1,332	1,328	1,339
(17.81)	16/17 Actual	1,320	1,324	1,329	1,328	1,325	1,320	1,321	1,312	1,313	-	1,321

Student Enrollment – By Month

Grade	BUDGET	OCT	NOV	DEC	JAN	FEB	MAR	APR	MAY	JUN	AVG 2017	+/(-)
K	75.0	79.0	78.0	80.0	81.0	83.0	82.0	81.0	80.0	-	80.1	5.1
1	76.0	90.0	90.0	88.0	88.0	89.0	89.0	90.0	89.0	-	89.1	13.1
2	80.0	83.0	86.0	85.0	83.0	85.0	85.0	84.0	84.0	-	84.1	4.1
3	76.0	83.0	85.0	85.0	85.0	85.0	85.0	84.0	84.0	-	84.2	8.2
4	98.0	98.0	100.0	99.0	98.0	97.0	97.0	98.0	99.0	-	98.2	0.2
5	100.0	101.2	102.2	102.2	104.2	107.2	107.2	106.2	107.2	-	104.3	4.3
6	113.0	112.0	112.9	113.9	114.8	114.8	114.8	114.2	113.2	-	113.7	0.7
7	105.0	110.6	111.6	113.3	113.3	112.3	110.6	109.6	111.6	-	111.5	6.5
8	101.0	102.3	99.3	102.3	101.0	101.0	103.0	102.7	102.7	-	101.7	0.7
9	122.0	126.3	125.6	125.6	124.6	121.7	123.5	123.2	123.2	-	124.5	2.5
10	123.0	120.2	120.2	119.4	119.4	117.1	117.7	116.4	117.4	-	118.8	(4.2)
11	107.0	106.5	108.8	105.8	102.8	103.8	103.5	100.6	100.6	-	104.3	(2.7)
12	105.0	112.0	109.7	108.7	109.7	103.6	102.6	101.7	101.2	-	106.8	1.8
Total	1,281.0	1,324.2	1,329.4	1,328.2	1,324.8	1,320.4	1,320.9	1,311.6	1,313.1	-	1,321.3	40.3

Student Enrollment – Grade Comparison

Budgeted vs. Actual



South Whidbey School District Enrollment - By Building					
Year	K-5	LMS	SWHS	SWA	Total
Sep-16	530.1	323.9	417.5	48.1	1,319.5
Oct-16	535.2	323.9	415.6	49.5	1,324.2
Nov-16	542.2	322.8	415.3	49.1	1,329.4
Dec-16	540.2	328.5	411.9	47.6	1,328.2
Jan-17	540.2	328.1	409.1	47.3	1,324.8
Feb-17	547.2	327.1	404.2	41.9	1,320.4
Mar-17	546.2	327.4	405.0	42.2	1,320.9
Apr-17	544.2	325.5	400.4	41.5	1,311.6
May-17	544.2	326.5	400.8	41.6	1,313.1
YTD AVG	541.1	325.9	408.9	45.4	1,321.3
Budget	505.0	319.0	420.6	36.4	1,281.0

Student Enrollment - Actual by Building