

Get on Board!

WHAT MAKES A **GREAT** SCHOOL BOARD MEMBER?

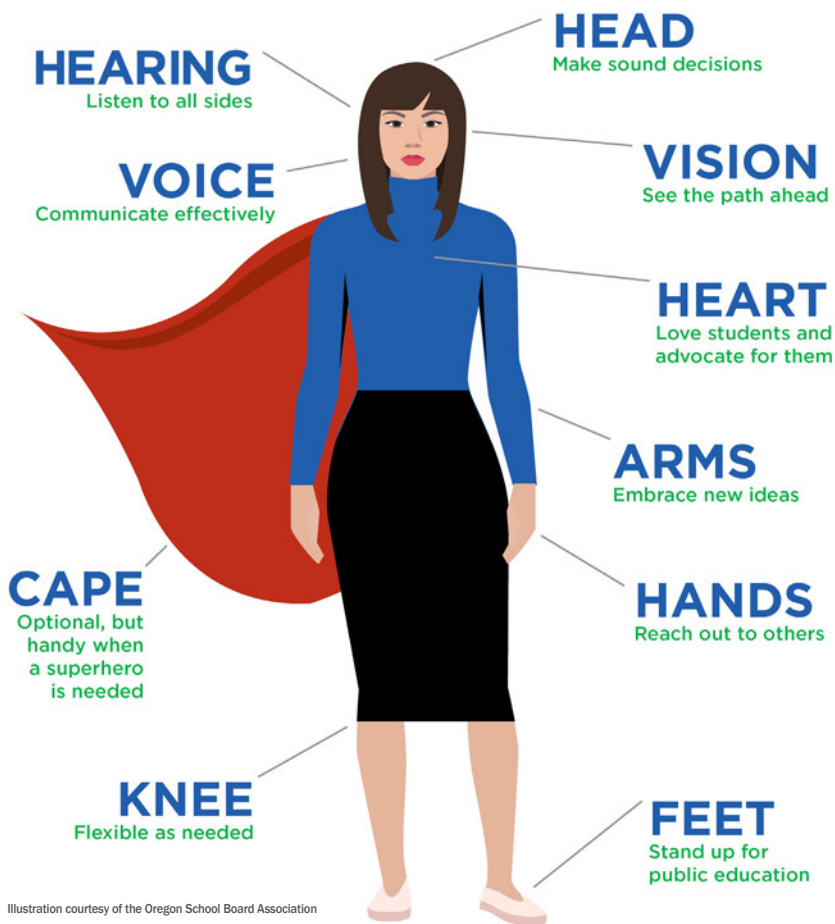


Illustration courtesy of the Oregon School Board Association

Who are school directors?

Washington state's public school districts are directed by publically-elected school boards. These board members — called "school directors" — are citizens just like you! They are parents and grandparents, young people and senior citizens, and community members from all walks of life.

There is great value in diversity on a school board. Each member brings his or her varying experiences and background to inform good decision making with a spirit of teamwork.

A statewide survey conducted by WSSDA shows that its members run for school board for two primary reasons: to give back to their community and to help children get a good education.

What does a school board do?

School directors work together to oversee the school district. As a board, their primary responsibilities are:

- Hire, supervise and evaluate the superintendent
- Set the vision, mission and strategic goals for the district
- Review, revise and adopt policies
- Establish and oversee the budget
- Serve as community representatives
- Monitor the district's progress towards its goals

continued >

WHERE CAN YOU FIND THE NEXT GREAT SCHOOL BOARD MEMBER?
Look in the mirror: It might be YOU.